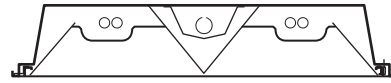
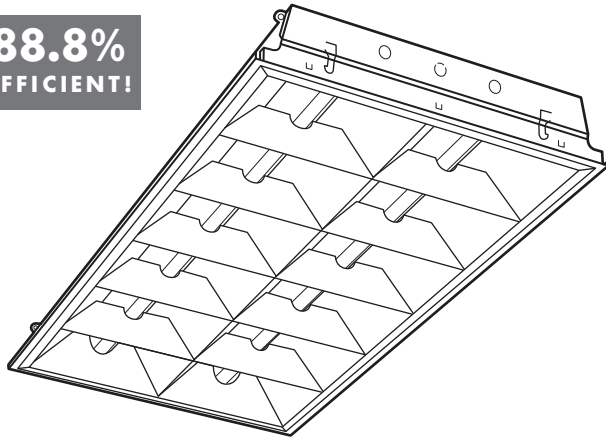


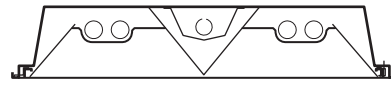
2' x 2' & 2' x 4' EFFICIENT TROFFER

SERIES **EFT**
 VOLTAGE TYPE JOB _____

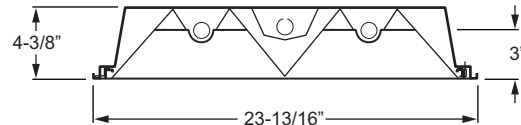
88.8%
EFFICIENT!



2 Twin Tube lamps



2 U-lamps (1-5/8" leg spacing)



2 T8 lamps

SPECIFICATIONS

- HOUSING – 22 gauge die-formed C.R.S.
- DOOR FRAME & LOUVER – Door: 20 gauge C.R.S., flat with mitered corners. T-slot steel hinge allows reversible hinging and latching. Louver: 25 gauge C.R.S.
- FINISH – Door and Housing: 92% minimum average reflective white powder coat with multi-stage iron/phosphate prepared metal. Louver: Highly reflective matte white powder coat.
- ELECTRICAL – Electronic ballast standard, instant start T8, rated Class P.
- LABELS – UL/CUL listed as recessed fluorescent luminaire suitable for dry or damp locations.
- MOUNTING – NEMA Type "G" standard. NEMA Type "F" available.

FEATURES

- The 88.8% highly efficient EFT surpasses most comparable product offerings in quality and efficiency.
- Designed to provide economical efficient lighting.
- Full 3" cross baffles provide lamp cutoff and assist in glare reduction.
- Fully enclosed, spring-loaded cam latches allow years of hassle-free maintenance.
- T-slot steel hinge ensures positive retention when door is opened.
- Deep reinforcement ribs provide added strength.
- Integral T-bar clips quickly secure fixture to structure.
- Field convertible to NEMA Type "F".
- All parts painted after fabrication to facilitate installation, increase efficiency, and inhibit corrosion.
- This fixture is proudly made in the USA.

ORDERING INFORMATION

Submittal

EXAMPLE: SERIES TYPE WIDTH LENGTH TOTAL WATTAGE/ LAMPS TYPE OPTIONS BALLAST VOLTAGE
EFT G - 2 4 - 2 32 - OPTIONS - EB2 - UNV

| SERIES | |
|----------------|-------------------------------------|
| EFT | Efficient Troffer (No air handling) |
| CEILING TYPE | |
| G | NEMA Type "G" |
| F | NEMA Type "F" (field convertible) |
| NOMINAL WIDTH | |
| 2 | 2' |
| NOMINAL LENGTH | |
| 2 | 2' |
| 4 | 4' |

| TOTAL LAMPS | |
|--------------------------|--|
| 2 | |
| LAMP WATTAGE/TYPE | |
| 2' FIXTURE LAMP OPTIONS: | |
| 17 | 2', 17 watt T8 |
| 31UN | 2', U-bent, 31 watt T8, 1-5/8" leg spacing |
| 40TT | 2', 40 watt long twin tube |
| 4' FIXTURE LAMP OPTIONS: | |
| 32 | 4', 32 watt T8 |
| OPTIONS | |
| EM | Emergency ballast |

| BALLAST TYPE | |
|--------------|---------------------------|
| EB2 | 2-lamp electronic ballast |
| VOLTAGE | |
| 120 | 120V |
| 277 | 277V |
| UNV | 120 - 277V |
| 347 | 347V |

Note: For more options/accessories, ballast combinations, and product details, please consult factory.



Williams Catalog #EFTG-24-232-EB2
 Test Report #14240.0, Dated 08/06/08

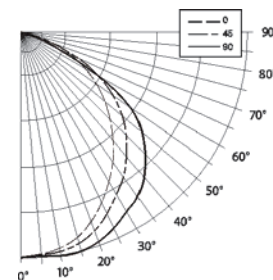
Lamp Type: F32T8/835/RS
 Lamp Quantity: 2

CANDLEPOWER DISTRIBUTION

| VERT. ANG. | HORIZONTAL ANGLE | | | ZONAL LUMENS |
|------------|------------------|-------|-------|--------------|
| | 0 | 45 | 90 | |
| 0 | 2032. | 2032. | 2032. | |
| 5 | 2013. | 2021. | 2028. | 192.9 |
| 15 | 1923. | 1978. | 2051. | 561.8 |
| 25 | 1697. | 1807. | 1949. | 839.2 |
| 35 | 1430. | 1589. | 1813. | 1007.1 |
| 45 | 1114. | 1327. | 1554. | 1025.4 |
| 55 | 802. | 984. | 1197. | 883.8 |
| 65 | 481. | 587. | 385. | 500.3 |
| 75 | 204. | 176. | 126. | 181.2 |
| 85 | 56. | 48. | 31. | 49.5 |
| 90 | 0. | 0. | 0. | |

LUMEN SUMMARY

| ZONE | LUMENS | % LAMP | % FIXTURE |
|--------|--------|--------|-----------|
| 0 - 30 | 1594. | 27.0 | 30.4 |
| 0 - 40 | 2601. | 44.1 | 49.6 |
| 0 - 60 | 4510. | 76.4 | 86.1 |
| 0 - 90 | 5241. | 88.8 | 100.0 |
| 0-180 | 5241. | 88.8 | 100.0 |



TOTAL LUMINAIRE OPTICAL EFFICIENCY = 88.8%

SPACING CRITERIA: END= 1.1 DIAG.= 1.2 ACROSS= 1.4

ZONAL CAVITY COEFFICIENTS

EFFECTIVE FLOOR CAVITY REFL. = .20

| CEILING WALL RCR | .80 | | | .70 | | | .50 | | |
|------------------|-----|-----|-----|-----|-----|-----|-----|-----|-----|
| | .70 | .50 | .30 | .70 | .50 | .30 | .50 | .30 | .10 |
| 0 | 106 | 106 | 106 | 103 | 103 | 103 | 99 | 99 | 99 |
| 1 | 98 | 95 | 91 | 96 | 93 | 90 | 89 | 87 | 84 |
| 2 | 91 | 84 | 79 | 89 | 83 | 78 | 80 | 76 | 72 |
| 3 | 84 | 76 | 69 | 82 | 74 | 68 | 72 | 67 | 62 |
| 4 | 77 | 68 | 61 | 75 | 66 | 60 | 64 | 59 | 54 |
| 5 | 71 | 60 | 53 | 69 | 59 | 52 | 57 | 51 | 46 |
| 6 | 65 | 54 | 46 | 63 | 53 | 46 | 51 | 45 | 41 |
| 7 | 60 | 48 | 41 | 58 | 48 | 41 | 46 | 40 | 35 |
| 8 | 55 | 43 | 36 | 54 | 43 | 36 | 42 | 35 | 31 |
| 9 | 51 | 39 | 32 | 49 | 38 | 31 | 37 | 31 | 27 |
| 10 | 47 | 35 | 28 | 46 | 35 | 28 | 34 | 28 | 23 |

QUANTITY ESTIMATOR

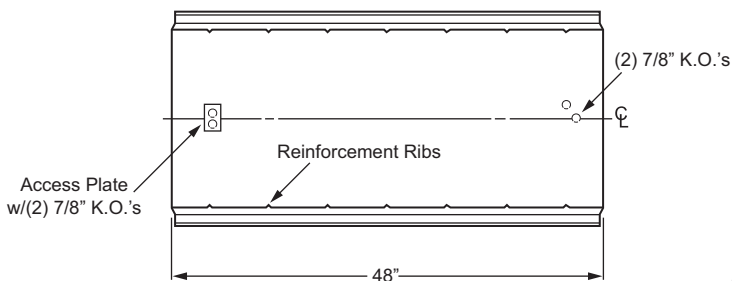
NUMBER OF FIXTURES REQUIRED - ITEM #: **EFTG-24-232**

| ROOM SIZE | +/- 40 fc. | +/- 60 fc. | +/- 80 fc. |
|----------------------------|------------|------------|------------|
| 30'x30' (900 sq. ft.) | 10 | 15 | 20 |
| 50'x50' (2500 sq. ft.) | 28 | 43 | 57 |
| 100'x100' (10,000 sq. ft.) | 114 | 170 | 227 |

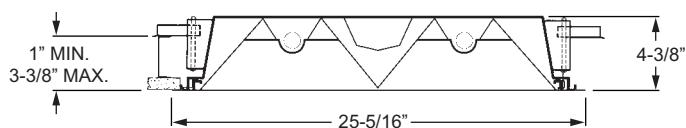
Calculations based on standard reflectance of 80/50/20 and a light loss factor of .85 with a 9'-0" ceiling height.

| | EFT | 2X4 standard 3-lamp T8 parabolic | |
|--|-----------------------|----------------------------------|--|
| Fixture efficiency | 88.8% | 77.1% | Light level calculated on 9' ceilings 60'x60' room dimensions, 80/50/20 reflectances, 95 LLD, 90 LDD, horizontal light level on 2.5' workplane height. Fixture spacing: 2x4 8x10 centers, 2x2 8x8 centers. |
| Lighting power density | .70 W/ft ² | 1.03 W/ft ² | |
| Input wattage | 60 W | 77 W | |
| Average maintained horizontal light level | 55 Fc | 69 Fc | |

BACK VIEW



CROSS SECTION NEMA TYPE "F" INSTALLATION



MAXIMUM RECOMMENDED CEILING OPENING IS 24-3/8" x 48-3/8"

For continuous row mounting, add 49-5/16" for each additional fixture to obtain ceiling opening. 1-5/16" between end plates.

